

SECTION: G REPLACEMENT PARTS

G-1 ORDERING REPLACEMENT PARTS:

Your local Prosser distributor can supply parts and repair service. When ordering parts, ALWAYS furnish the following information: Specify pump model number as shown on nameplate, serial number, part number, item number and part name.

1. Pump serial number. (G-1)
2. Pump model number. (G-2)
4. Part description.
5. Item part number.
6. Quantity required.
7. Shipping instructions.
8. Billing Instructions.

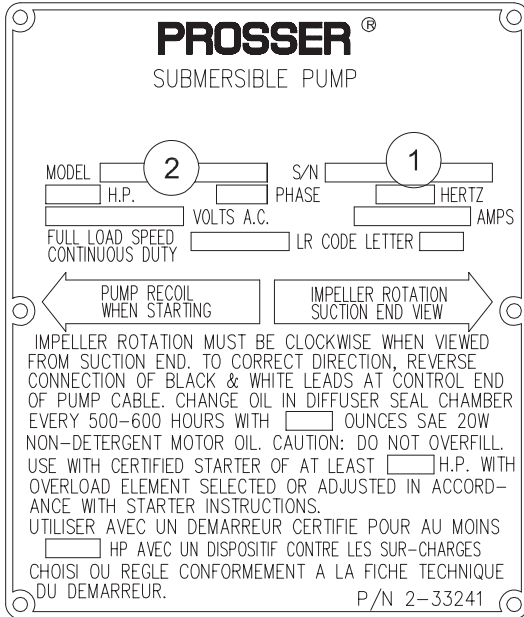
G-1 SERIAL NUMBER:

The Serial Number block will consists of a six digit number, which is specific to each pump and may be preceded by a alpha character, which indicates the plant location. This number will also be suffixed with a three or four digit number, which indicates the date the unit was built (Date Code).
 EXAMPLE: A012345 495

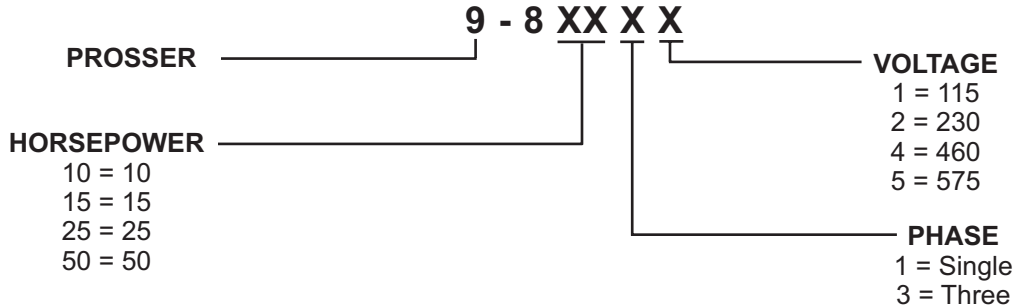
Reference the six digit portion (Serial Number) of the number when referring to the product.

G-2 MODEL NUMBER:

This designation consist of numbers which represent, Pump Line, Horsepower, Motor phase, Voltage and Variations (as shown below). This Number is used for ordering and obtaining information.



MODEL NUMBER DESIGATION



PUMP SERIES: 9-81000, 9-81500

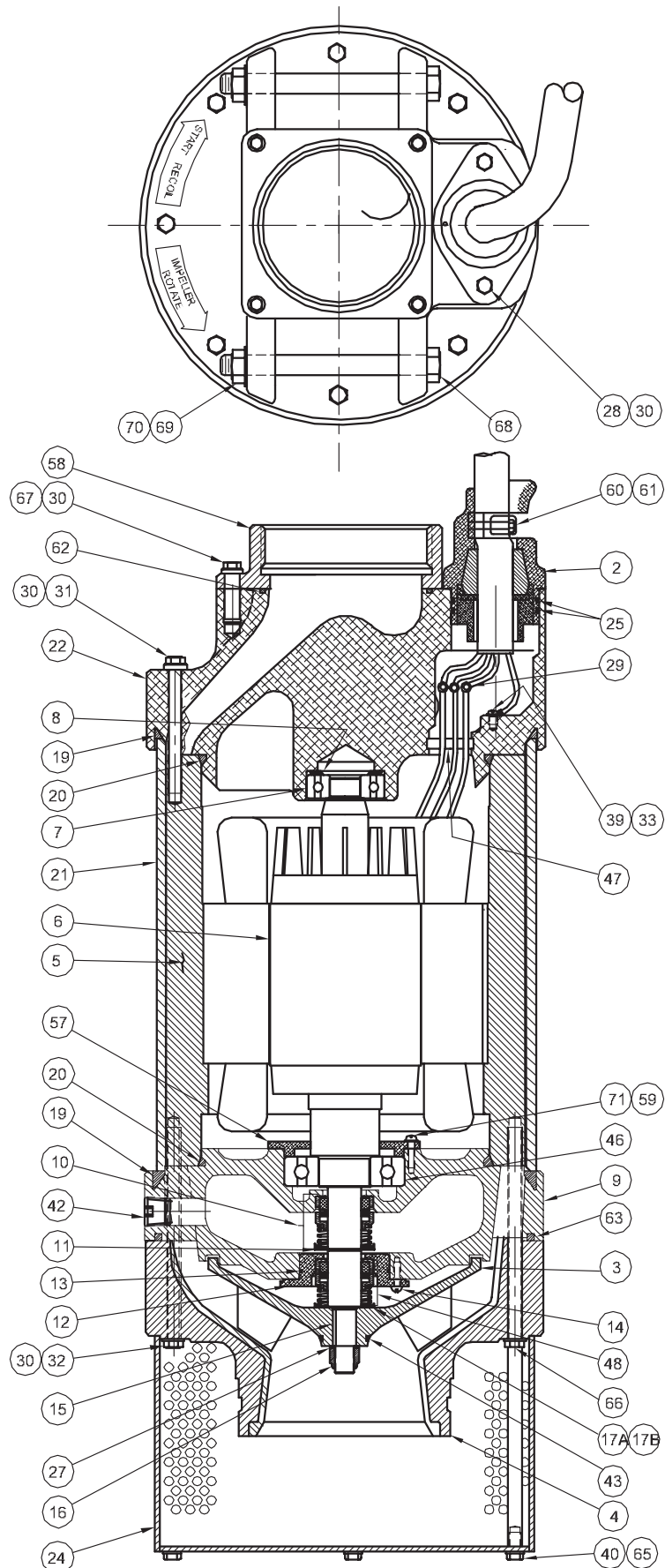


FIGURE 14

PUMP SERIES: 9-81000, 9-81500

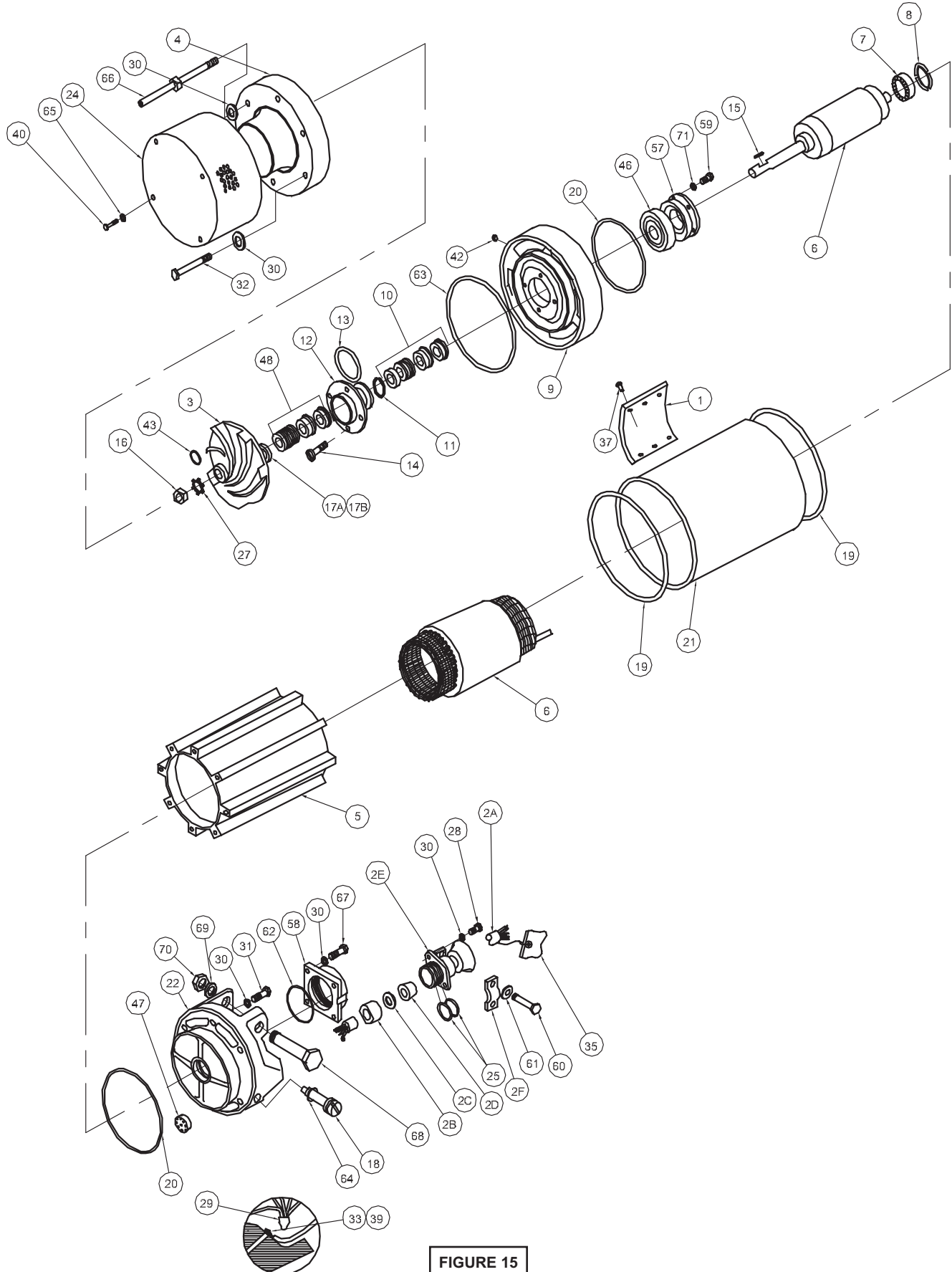


FIGURE 15

PUMP SERIES: 9-81000, 9-81500

PARTS KITS

Bearing & Seal Kit P/N- 9-815580 (+) 7, 8, 10, 11, 13, 15, 16, 17a, 17b, 27, 43, 46, 48
O-Ring Kit..... P/N- 9-815574 (♦) 2d, 19, 20, 25, 29, 47, 62, 64
Seal Tool Kit..... TL - 213557 Contact Parts Dept.

PARTS LIST

ITEM	QTY	PART NO.	DESCRIPTION		
1	1	2-33241	Name Plate		
2	1	9-840710-44	Cable & Gland Assy	230V	
	1	9-840710-5	Cable & Gland Assy	460/575V	
2a	1	9-810893-50	* Cable, 50 ft.	230V	
	1	9-350887-50C	* Cable, 50 ft.	460/575V	
2b	1	9-840755	* Cable Grip Nut	Zp	
2c	1	9-840759-1	* Cable Grip Washer	230V	
	1	9-840759-2	* Cable Grip Washer	460/575V	
2d	1	9-840751-3	*♦ Bushing, Neoprene	230V	
	1	9-840751-6	*♦ Bushing, Neoprene	460/575V	
2e	1	9-840711	* Cable Gland	Aluminum	
2f	1	9-840760-4	* Cable Clamp	Aluminum	
3	1	9-810203	Impeller, Stainless	7.80" Dia	10HP-HH
	1	9-810200	Impeller, Stainless	7.19" Dia.	10HP-HV
	1	9-815203	Impeller, Stainless	7.80" Dia	15HP-HH
	1	9-815200	Impeller, Stainless	7.19" Dia.	15HP-HV
4	1	9-810105	Suction Case	10HP-HH	
	1	9-815100	Suction Case	10 & 15HP-HV	
	1	9-815105	Suction Case	15HP-HH	
5	1	9-610500-1	Frame	10HP	
	1	9-615500-2	Frame	15HP	
6	1	9-610400	Rotor	10HP, 230V	
	1	9-810630	Stator	10HP, 230V	
	1	9-610400	Rotor	10HP, 460V	
	1	9-810630	Stator	10HP, 460V	
	1	9-610400	Rotor	10HP, 575V	
	1	9-810635	Stator	10HP, 575V	
	1	9-615400	Rotor	15HP, 230V	
	1	9-815630	Stator	15HP, 230V	
	1	9-615400	Rotor	15HP, 460V	
	1	9-815630	Stator	15HP, 460V	
	1	9-615400	Rotor	15HP, 575V	
	1	9-815635	Stator	15HP, 575V	
7	1	2-34007	+ Bearing		
8	1	2-30002-3	+ Bearing Loading Spring		
9	1	9-815300	Diffuser		
10	1	2-31006	+ Shaft Seal, Inboard	Carbon/Ceramic/Buna-N	
11	1	2-27002-87	+ Snap Ring		
12	1	9-815310	Seal Retainer		
13	1	2-31003-035	+ O-Ring		
14	4	2-22003-41	Rd. Hd. Screw	10-24 x .50"Lg.	
15	1	9-815410	+ Key	.13" x .13 x .88"	
16	1	2-20002-38	+ Lock Nut, Impeller	1/2-20, Stainless	
17a	A/R	9-815210-1	+ Shim, .016 Thk		
17b	A/R	9-815210-2	+ Shim, .032 Thk.		
18	1	9-615758	Plug Assy.		

(*) Included with item number 2.

PUMP SERIES: 9-81000, 9-81500

19	2	2-31003-448	◆	O-Ring	
20	2	2-31003-366	◆	O-Ring	
21	1	9-810555		Outer Shell	10HP
	1	9-815555		Outer Shell	15HP
22	1	9-615700		Discharge Head	
24	1	9-815000-1		Strainer	Stainless Steel
25	2	2-31003-138	◆	O-ring	
27	1	9-815211	+	Lockwasher, Impeller	.51 x 1.20, Stainless
28	2	2-23012-51		Capscrew	3/8-16 x 1"Lg, Zp
29	4	2-12029	◆	Connector	230V
	6	2-12026-2	◆	Connector	460V
	3	2-12026-2		Connector	575V
30	21	2-21002-18		Flat Washer	3/8 Stainless
31	7	2-23013-39		Capscrew	3/8-16 x 3.25"Lg., Zp
32	4	2-23013-84		Capscrew, HH	3/8-16 x 5.00"Lg., Zp
	4	2-23013-93		Capscrew, HV	3/8-16 x 5.50"Lg., Zp
33	1	2-23027-67		Rd. Hd. Screw	1/4-20 x .375"Lg., Cad
35	1	2-33012		Tag, Lead, Ground	
37	6	2-25001-4		Drive Screw	
38	25oz	A3195AB		Oil, Navy	
39	1	2-21001-22		Lockwasher	1/4 Cad
40	4	2-23011-2		Hex Hd Screw	5/16-18 x .50"Lg. Zp.
42	1	2-32004-20		Pipe Plug	.50" NPT Stainless
43	1	2-31003-122	+	O-Ring	
46	1	2-34004	+	Bearing, Angular Ball	
47	1	9-840752	◆	Stator Dam	230/460V
	1	9-840752-1	◆	Stator Dam	575V
48	1	9-815350	+	Shaft Seal, Outboard	Silicon/Silicon/Viton®
57	1	9-815311		Bearing Retainer	
58	1	9-815720		Discharge Adapter	
59	4	2-23014-43		Hex Hd Cap Screw	10-24 x .625" Lg. Zp
60	2	1-130-1		Hex Hd Cap Screw	5/16-18 x 1.50" Lg Stainless
61	2	2-21002-15		Flat Washer	5/16 Zp
62	1	2-31003-244	◆	O-Ring	
63	1	2-31003-273	◆	O-Ring	
64	1	2-31003-015	◆	O-Ring	
65	4	2-21002-14		Flat Washer	5/16 Zp
66	4	9-815010		Strainer Bolt	
67	4	2-23012-60		Hex Hd Cap Screw	3/8-16 x 1.125" Lg. Zp
68	2	2-23013-95		Hex Hd Cap Screw	1/2-13 x 5.50" Lg. Zp
69	2	2-21005-23		Lockwasher	1/2 Zp
70	2	2-20009-17		Hex Nut	1/2-13 Zp
71	5	002618		Lockwasher	#10 Cad

Request a Quote

PUMP SERIES: 9-82500, 9-85000

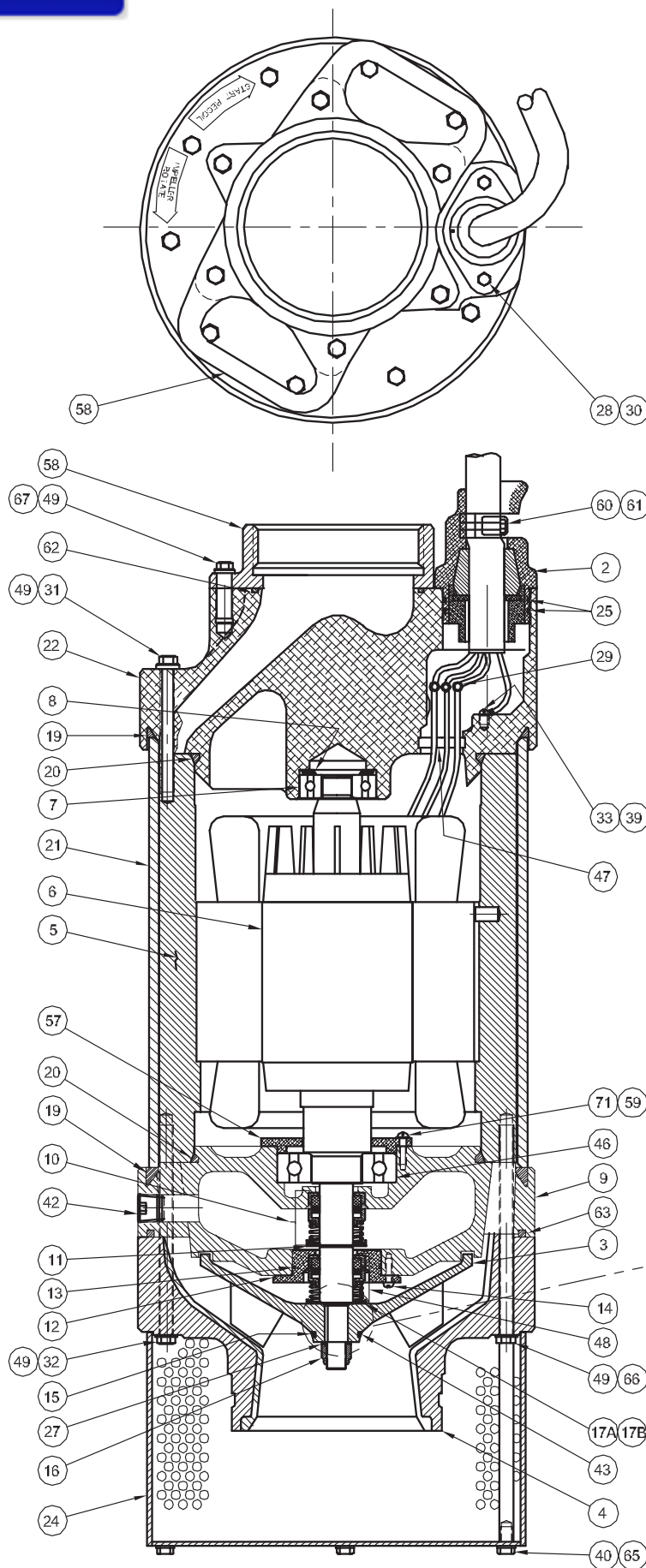


FIGURE 16

PUMP SERIES: 9-82500, 9-85000

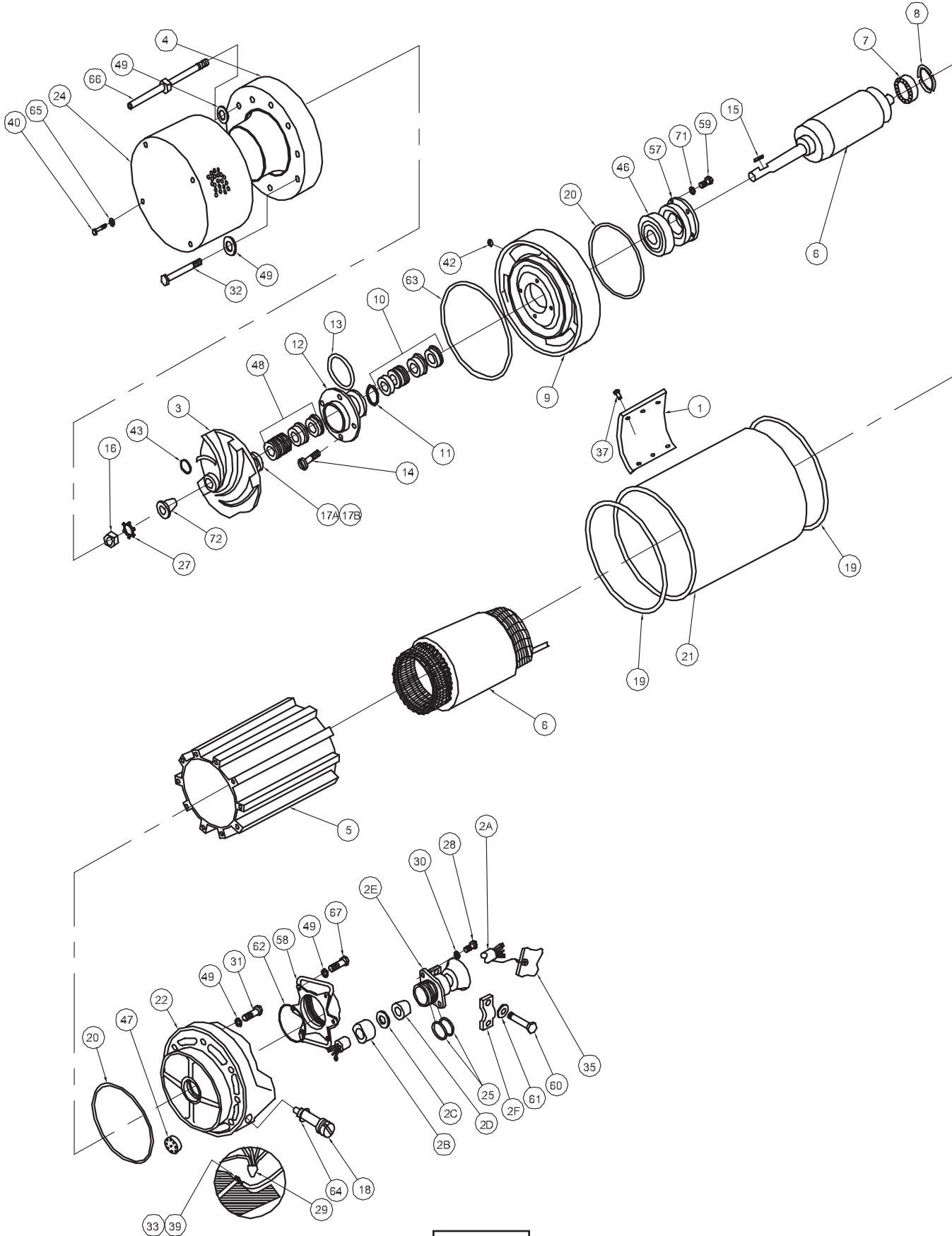


FIGURE 17

PUMP SERIES: 9-82500, 9-85000
PARTS KITS

Bearing & Seal Kit P/N- 9-840582 (+) 7, 8, 10, 11, 13, 15, 16, 17a, 17b, 27, 43, 46, 48
O-Ring Kit..... P/N- 9-840574 (◆) 2d, 13, 18, 19, 20, 25, 29, 47, 62, 63, 64
Seal Tool Kit..... TL - 21358-25 Contact Parts Dept.
Seal Tool Kit..... TL - 21358-50 Contact Parts Dept.

PARTS LIST

ITEM	QTY	PART NO.	DESCRIPTION		
1	1	2-33241	Name Plate, CSA		
	1	2-33013	Name Plate,		
2	1	9-840710-10	Cable & Gland Assy		
2a	1	9-825907-50	* Cable, 50 ft.		
2b	1	9-840748	* Cable Grip Nut		
2c	1	9-840759-5	* Cable Grip Washer		
2d	1	9-840749-2	*◆ Bushing, Neoprene		
2e	1	9-840715	* Cable Gland	Aluminum	
2f	1	9-840760-4	* Cable Clamp	Aluminum	
3	1	9-825203	Impeller, Stainless	11.00" Dia	25HP-HH
	1	9-825200	Impeller, Stainless	8.01" Dia.	25HP-HV
	1	9-850203	Impeller, Stainless	8.46" Dia	50HP-HH
	1	9-850200	Impeller, Stainless	8.01" Dia.	50HP-HV
4	1	9-840100-4	Suction Case	25 & 50HP-HH	
	1	9-840100	Suction Case	25HP-HV	
	1	9-840100-8	Suction Case	50HP-HV	
5	1	9-840500	Frame	25HP	
	1	9-850500	Frame	50HP	
6	1	9-825408	Rotor	25HP, 230V	
	1	9-825630	Stator	25HP, 230V	
	1	9-825408	Rotor	25HP, 460V	
	1	9-825630	Stator	25HP, 460V	
	1	9-825408	Rotor	25HP, 575V	
	1	9-825635	Stator	25HP, 575V	
	1	9-850400	Rotor	50HP, 460V	
	1	9-850634	Stator	50HP, 460V	
	1	9-850400	Rotor	50HP, 575V	
	1	9-850635	Stator	50HP, 575V	
7	1	2-34013	+ Bearing		
8	1	2-30002-5	+ Bearing Loading Spring		
9	1	9-840300	Diffuser		
10	1	2-31020	+ Shaft Seal, Inboard	Carbon/Ceramic/Buna-N	
11	1	2-27002-125	+ Snap Ring		
12	1	9-840310	Seal Retainer		
13	1	2-31003-038	+◆ O-Ring		
14	4	2-22003-41	Rd. Hd. Screw	10-24 x .50"Lg.	
15	1	9-840410	+ Key, 25HP	.15" x .15" x .80"	
	1	9-850410-1	Key, 50HP	.25 x .27 x 1.0" Lg	
16	1	2-20002-43	+ Lock Nut, Impeller	5/8-18, Stainless	
	1	9-850209	Lock Nut, Impeller	1-12	
17a	A/R	9-840210-2	+ Shim, .010 Thk	25HP	
	A/R	2-21003-43	Shim, 1"	50HP	
17b	A/R	9-840210-3	+ Shim, .020 Thk.	25HP	
	A/R	2-21003-44	Shim, 1"	50HP	
18	1	9-840758	◆ Plug Assy.		
19	2	M-6458	◆ O-Ring		

(*) Included with item number 2.

PUMP SERIES: 9-82500, 9-85000

20	2	2-31003-446	◆	O-Ring	
21	1	9-840555-1		Outer Shell	25HP
	1	9-850555		Outer Shell	50HP
22	1	9-840700		Discharge Head	
24	1	9-825000-1		Strainer	Stainless Steel
25	2	2-31003-138	◆	O-ring	
27	1	9-840211	+	Lockwasher,	Impeller, 25HP, .64 x 1.437, Stainless
	1	2-21016		Lockwasher,	Impeller, 50HP, 1 x 1.937, Stainless
28	2	2-23012-51		Capscrew	3/8-16 x 1"Lg, Zp
29	4	2-12029-1	◆	Connector	230V
	6	2-12029-1	◆	Connector	460V
	3	2-12029		Connector	575V
30	21	2-21002-18		Flat Washer	3/8 Stainless
31	7	2-23013-59		Capscrew	1/2-13 x 3.75"Lg., Zp
32	4	2-23013-86		Capscrew, HH	1/2-13 x 5.00"Lg., Zp
	4	2-23013-93		Capscrew, HV	3/8-16 x 5.50"Lg., Zp
33	1	2-23027-67		Rd. Hd. Screw	1/4-20 x .375"Lg., Cad
35	1	2-33012		Tag, Lead, Ground	
37	6	2-25001-4		Drive Screw	
38	32oz	A3195AB		Oil, Navy	
39	1	2-21001-22		Lockwasher	1/4 Cad
40	4	2-23011-2		Hex Hd Screw	5/16-18 x .50"Lg. Zp.
42	1	2-32004-20		Pipe Plug	.50" NPT Stainless
43	1	2-31003-122	+◆	O-Ring	25HP ONLY
46	1	2-34016	+	Bearing, Angular Ball	
47	1	9-840750	◆	Stator Dam	25HP, 230/460V
	1	9-840750-1	◆	Stator Dam	25HP- 575V, 50H -460V
48	1	9-840350	+	Shaft Seal,	Outboard, 25HP Silicon/Silicon/Viton®
	1	9-850350		Shaft Seal,	Outboard, 50HP Silicon/Silicon/Viton®
49	25	2-21002-23		Flat Washer	1/2" Zp
57	1	9-840313		Bearing Retainer	
58	1	9-840732		Discharge Adapter	
59	4	2-23030-16		Hex Hd Cap Screw	10-24 x .625" Lg. Stainless
60	2	2-23006-68		Hex Hd Cap Screw	5/16-18 x 1.25" Lg Zp
61	2	2-21002-15		Flat Washer	5/16 Zp
62	1	2-31003-260	◆	O-Ring	
63	1	2-31003-277	◆	O-Ring	
64	1	2-31003-015	◆	O-Ring	
65	4	2-21002-14		Flat Washer	5/16 Zp
66	4	9-825010		Strainer Bolt	1/2-13
67	4	2-23012-89		Hex Hd Cap Screw	1/2-13 x 1.50" Lg. Zp
71	4	2-21005-18		Lockwasher	#10 Cad
72	1	9-850208-1		Taper Lock Bushing	50HP ONLY

NEMA 3R (RainProof)

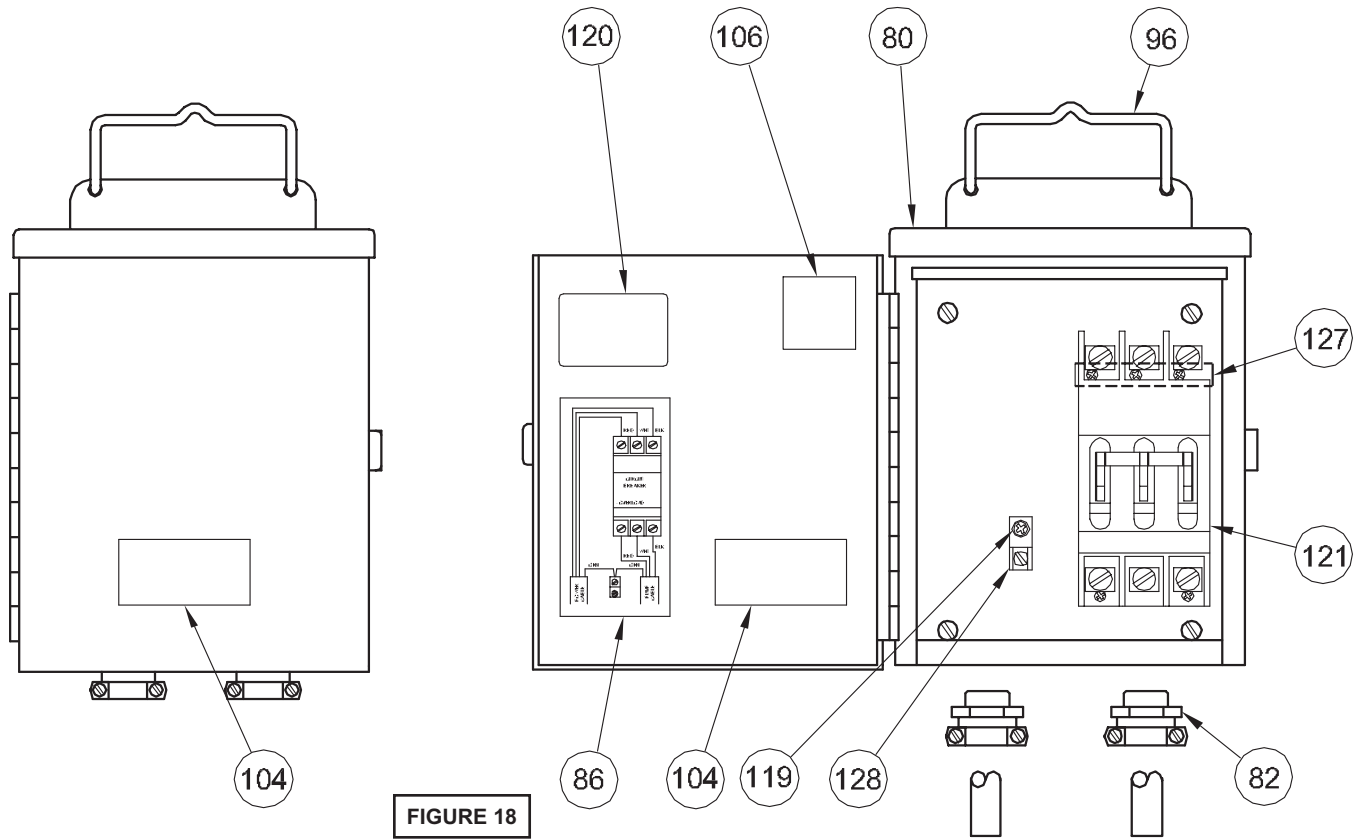


FIGURE 18

PARTS LIST

ITEM	QTY	PART NO.	DESCRIPTION
80.	1	9-840814	Enclosure, NEMA 3R
81.	4	2-22002-10	Screw 6-32 x .312"Lg.
82.	2	2-12005-2	Connector, 10-15HP .75", 230V
	2	2-12005-3	Connector, 10-15HP 1.00", 460/575V
	2	2-21005-4	Connector, 25-50HP 1.25", 230/460/575V
86.	1	2-33065	Connection Diagram 3 Phase
87.	5	2-22009-16	Screw 8-32 x .50"Lg
96.	1	9-100803	Handle
104.	2	2-33063	Name Plate
106.	1	085809	Lable, CSA
120.	1	2-33016	Caution Label
121.	1	9-810850-032	Circuit Breaker, 10HP, 230V 240V, 34A
	1	9-815850-136	Circuit Breaker, 10HP, 460V 600V, 18A
	1	9-810850-036	Circuit Breaker, 10HP, 575V 600V, 13.6A
	1	9-840850-036	Circuit Breaker, 15HP, 230V 600V, 45A
	1	9-815850-034	Circuit Breaker, 15HP, 460V 480V, 22A
	1	9-815850-136	Circuit Breaker, 15HP, 575V 600V, 18A
	1	9-825850-032	Circuit Breaker, 25HP, 230V 240V, 80A
	1	9-825850-034	Circuit Breaker, 25HP, 460V 480V, 40A
	1	9-825850-036	Circuit Breaker, 25HP, 575V 600V, 30A
125.	1	2-33011	Label (Not Shown)
127.	1	2-28014	Mounting Bracket
128.	1	086335	Ground Lug

NEMA 4 (WaterTight)

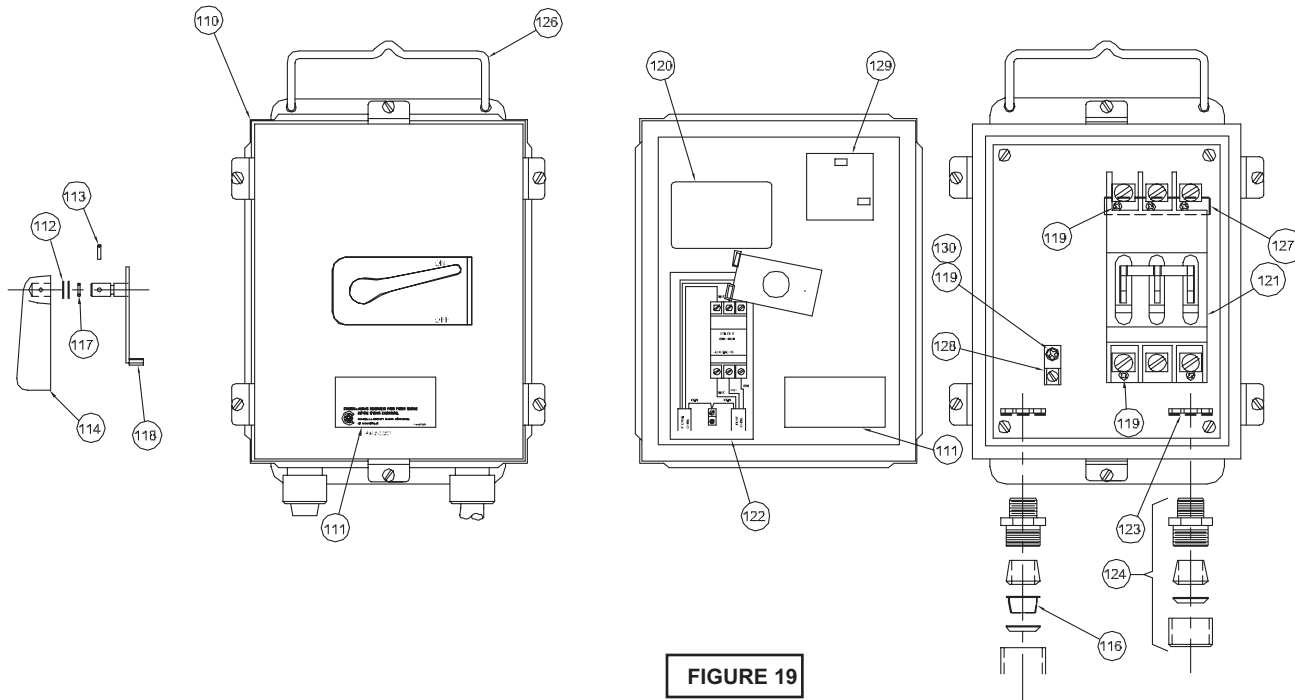


FIGURE 19

PARTS LIST

ITEM	QTY	PART NO.	DESCRIPTION	
110.	1	9-840859-2	Enclosure, NEMA 4	
111.	2	2-33237	Name Plate	
112.	A/R	2-21002-64	Shim Washer	
113.	1	2-28008-3	Roll Pin	
114.	1	9-840870	Handle	
116.	1	2-32066-23	Caplug, 10-15HP	460/575V
	1	2-32066-30	Caplug, 10-15HP	230V
	1	625-00718	Caplug, 25-50HP	
117.	1	2-31003-010	O-Ring	
118.	1	9-840860	Actuator Assembly	
119.	6	2-22009-16	Screw	8-32 x 1/2"Lg
120.	1	2-33016	Caution Label	
121.	1	9-810850-032	Circuit Breaker, 10HP, 230V	240V, 34A
	1	9-815850-136	Circuit Breaker, 10HP, 460V	600V, 18A
	1	9-810850-036	Circuit Breaker, 10HP, 575V	600V, 13.6A
	1	9-840850-036	Circuit Breaker, 15HP, 230V	600V, 45A
	1	9-815850-034	Circuit Breaker, 15HP, 460V	480V, 22A
	1	9-815850-136	Circuit Breaker, 15HP, 575V	600V, 18A
	1	9-825850-032	Circuit Breaker, 25HP, 230V	240V, 80A
	1	9-825850-034	Circuit Breaker, 25HP, 460V	480V, 40A
	1	9-825850-036	Circuit Breaker, 25HP, 575V	600V, 30A
	1	9-850850-034	Circuit Breaker, 50HP, 460V	480V, 60A
	1	9-840850-134	Circuit Breaker, 50HP, 575V	600V, 38A
122.	1	2-33065	Wiring Diagram	3 Phase
123.	2	2-12055-4	Connector, Nut	10-25HP-230V; 50HP-575V
	2	2-12055-2	Connector, Nut	10-25HP-460/575V; 50H -460V
124.	2	2-12017-6	Connector, Cable, NEMA 4	10-15HP-230V; 50HP-575V
	2	2-12017-4	Connector, Cable, NEMA 4	10-15HP-460/575V; 50H -460V
	2	2-12017-14	Connector, Cable, NEMA 4	25-50HP-230/460/575V
125.	2	2-33011	Label, (Not Shown)	
126.	1	9-840867	Handle, NEMA 4	
127.	1	2-28014	Mounting Bracket	
128.	1	086335	Ground Lug	
129.	1	085809	Name Plate, CSA	
130.	2	2-21001-15	Lockwasher #8	

230, 460, 575 Volt, Three Phase Control Panel Schematics *Since 1980*

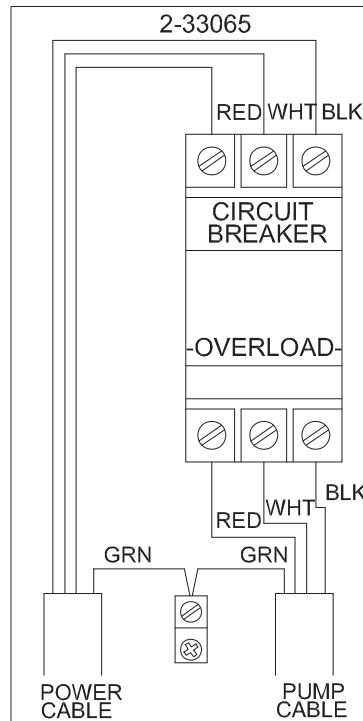
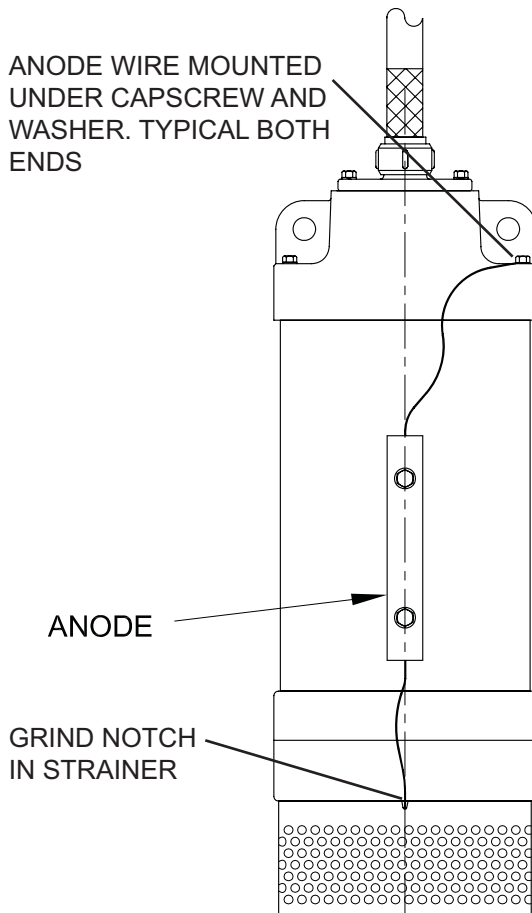


FIGURE 20

Galvanic Protection Kit P/N: 9-840572



PARTS LIST

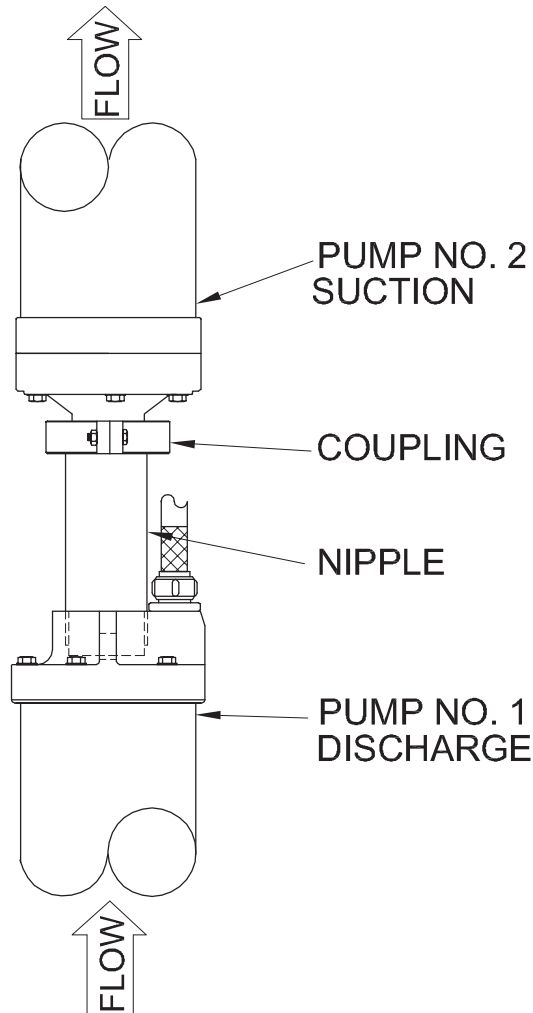
QTY	PART NO.	DESCRIPTION
2	2-210002-59	Flat Washer, 1/4" Stainless
2	2-23021-76	HxHd Screw, 1/4-20 x 1.37" lg SS
1	9-500520	Zinc Anode Sensor

1. Pump must be ordered with the Galvanic Protection Kit to have the correct frame and outer shell.
2. Align two clearance holes in outer shell with the two drilled and tapped holes in frame, before tightening cap screws on the suction nozzle.
3. Fill the two drilled & tapped holes in frame approximately half full of electrical bonding grease part number 2-45003-1.
4. Install washers and capscrews through zinc anode and into the frame holes, partially filled with bonding grease and tighten securely.
5. Route wire from anode to the suction nozzle. Loosen suction nozzle capscrew & washer and install wire between washer & suction nozzle, retighten capscrew. Route other wire to discharge head and install under discharge head capscrew and washer.
6. Slip suction strainer on pump, align mounting screws, mark strainer where anode wire passes between suction nozzle and strainer. Grind a notch in the strainer to allow clearance for the wire. Install the strainer.

Series Adapter Kit

Pump Models: 9-81000, 9-81500P/N: 9-815770

Pump Models: 9-82500, 9-85000P/N: 9-840770



PARTS LIST

P/N: 9-815770

QTY	PART NO.	DESCRIPTION
1	2-32015-3	Nipple, Reducer, 4" NPT x 6" Lg
1	2-32046-1	Coupling, Red, Victaulic, 5" x 4"
4	1-51-6	Hex Hd. Screw 3/8-16 x 5.50" Lg. Zp
4	2-23013-84	Hex Hd. Screw 3/8-16 x 5.00" Lg. Zp

P/N: 9-840770

QTY	PART NO.	DESCRIPTION
1	2-32015-4	Nipple, Victaulic, 6" NPT x 6" Lg
1	2-32045-3	Coupling, 6" Victaulic
5	2-23013-86	Hex Hd. Screw 1/2-13 x 5.00" Lg. Zp