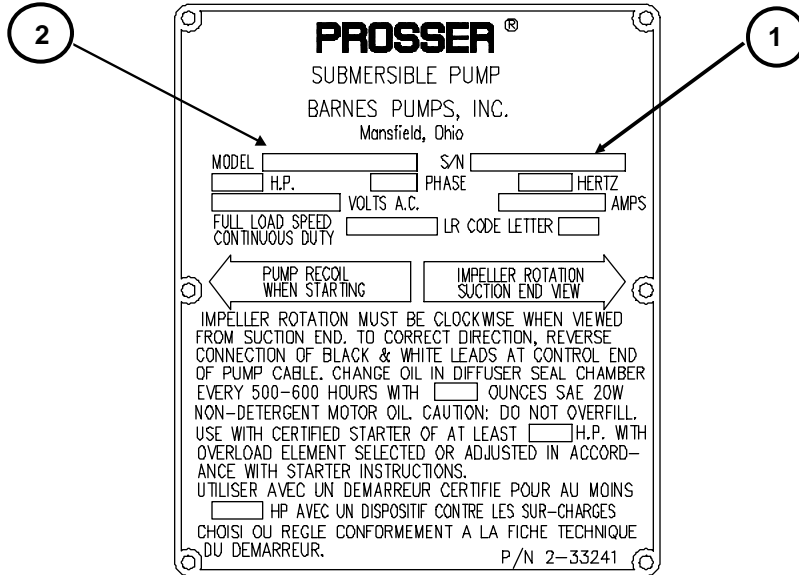


SECTION: G REPLACEMENT PARTS

G-1 ORDERING REPLACEMENT PARTS:

Your local Prosser distributor can supply parts and repair service. When ordering parts, **ALWAYS** furnish the following information: Specify pump model number as shown on nameplate, serial number, part number, item number and part name.

1. Pump serial number. (G-1)
2. Pump model number. (G-2)
4. Part description.
5. Item part number.
6. Quantity required.
7. Shipping instructions.
8. Billing Instructions.



G-1 SERIAL NUMBER:

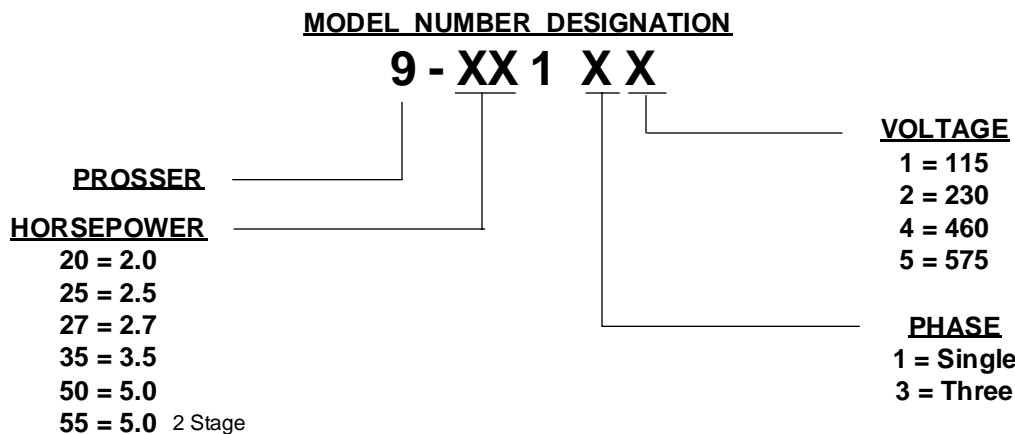
The Serial Number block will consists of a six digit number, which is specific to each pump and may be preceded by a alpha character, which indicates the plant location. This number will also be suffixed with a three or four digit number, which indicates the date the unit was built (Date Code).

EXAMPLE: A012345 495

Reference the six digit portion (Serial Number) of the number when referring to the product.

G-2 MODEL NUMBER:

This designation consist of numbers which represent, Pump Line, Horsepower, Motor phase, Voltage and Variations (as shown below). This Number is used for ordering and obtaining information.



PUMP SERIES: 9-20000, 9-25000, 9-27000, 9-35000 & 9-50000

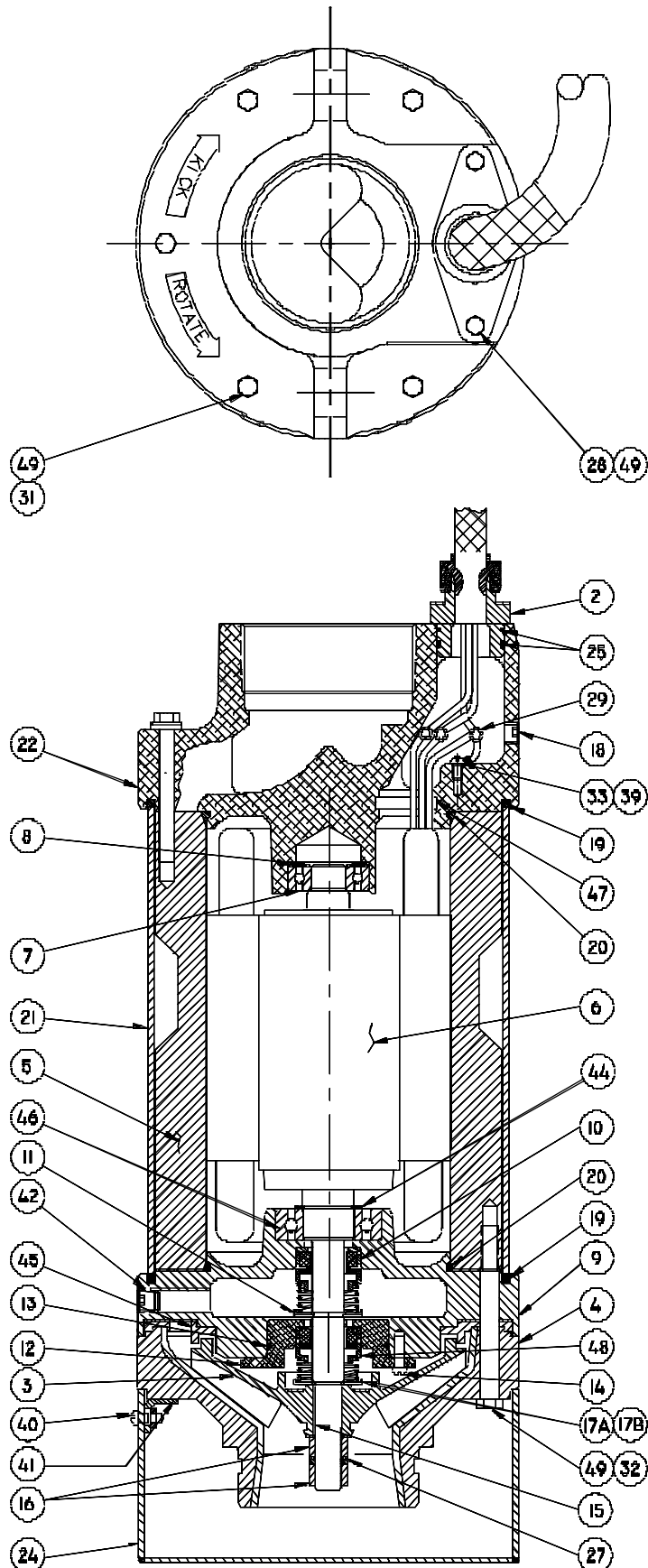


Fig. 14

PUMP SERIES: 9-20000, 9-25000, 9-27000, 9-35000 & 9-50000

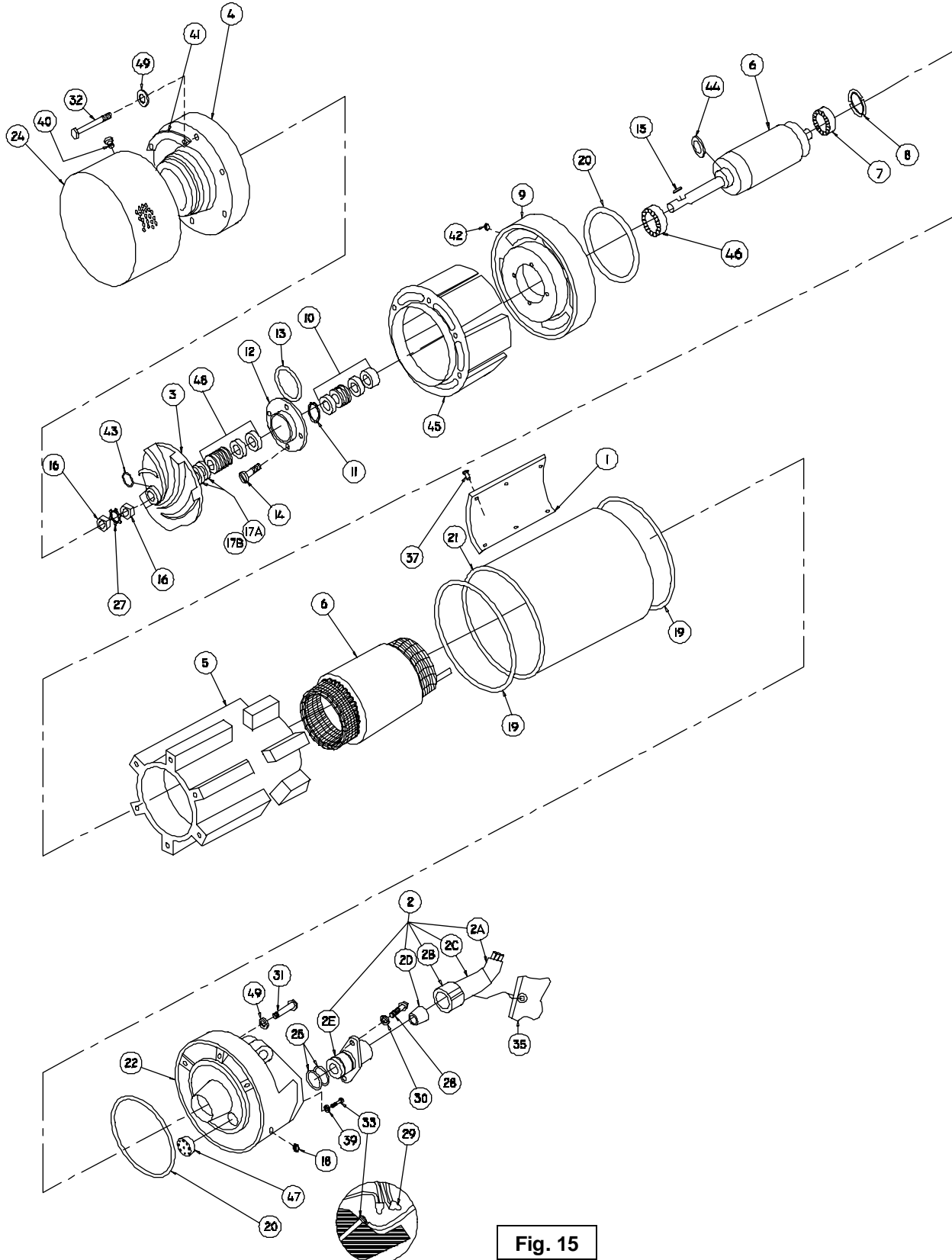


Fig. 15



PUMP SERIES: 9-20000, 9-25000, 9-27000, 9-35000 & 9-50000 Parts Kits

Bearing & Seal Kit.....P/N: 9-500580 † 7,8,10,11,13,15,16,17a,17b,27,43,46,48.

O-Ring Kit.....P/N :9-500574 † 2d,13,19,20,25,29,43.

Seal Tool Kit (Pusher & Bullet)....T/L: 21355, Contact Parts Dept.

CONVERSION KITS

Pump Model 9-25000 High Head to High VolumeP/N: 9-250180

Pump Model 9-25000 High Volume to High HeadP/N: 9-250185

PARTS LIST

ITEM	QTY.	DESCRIPTION	PART NO.
1	1	Name Plate	2-33241
2	1	Cable & Gland Assy	9-500710-2
2a	1	* Cable, 50 ft.	9-350887-50
2b	1	* Cable Grip Nut	Stainless Steel 2-12062
2c	1	* Cable Grip	Alodined 2-12020-2A
2d	1	*† Bushing	Neoprene 2-12022-2
2e	1	* Cable Gland	Aluminum 9-500711-1
3	1	Impeller, Stainless	5.31" Dia. 2HP 9-200200-6
	1	Impeller, Stainless	5.31" Dia. 2.5HP-HH 9-250200-6
	1	Impeller, Stainless	4.25" Dia., 2.5HP-HV & 2.75HP 9-275200-2
	1	Impeller, Stainless	5.22" Dia. 3.5HP 9-350200-7
	1	Impeller, Stainless	5.31" Dia. 5HP 9-500200-6
4	1	Suction Case	2HP, 2.5HP-HH 9-250100-1
	1	Suction Case	2.5HP-HV, 2.75HP & 5HP 9-500100-1
	1	Suction Case	3.5HP 9-350100-1
5	1	Frame	2HP, 2.5HP 9-250500
	1	Frame	3.5HP, 5HP 9-500500
6	1	Rotor	2HP, 115/208-230V, 1Ph 9-250400
	1	Stator	2HP, 115/208-230V, 1Ph 9-200600
	1	Rotor	2.5HP, 230V, 3Ph 9-250400
	1	Stator	2.5HP, 230V, 3Ph 9-250600
	1	Rotor	2.5HP, 460V, 3Ph 9-250400
	1	Stator	2.5HP, 460V, 3Ph 9-250600
	1	Rotor	2.5HP, 575V, 3Ph 9-250400
	1	Stator	2.5HP, 575V, 3Ph 9-250635
	1	Rotor	2.75HP, 115/208-230V, 1Ph 9-250400
	1	Stator	2.75HP, 115/208-230V, 1Ph 9-200600
	1	Rotor	3.5HP, 230V, 1Ph 9-500400
	1	Stator	3.5HP, 230V, 1Ph 9-350612
	1	Rotor	5HP, 230V, 3Ph 9-500400
	1	Stator	5HP, 230V, 3Ph 9-500600
	1	Rotor	5HP, 460V, 3Ph 9-500400
	1	Stator	5HP, 460V, 3Ph 9-500600
	1	Rotor	5HP, 575V, 3Ph 9-500400
	1	Stator	5HP, 575V, 3Ph 9-500635
7	1	† Bearing	112543
8	2	† Bearing Loading Spring	2-30001
9	1	Diffuser	9-500300-2
10	1	† Shaft Seal, Inboard	Carbon/Ceramic/Buna-N 2-31001
11	1	† Snap Ring	2-27004-59
12	1	Seal Retainer	9-500311
13	1	†† O-Ring	2-31003-035

* Included with item number 2.

PUMP SERIES: 9-20000, 9-25000, 9-27000, 9-35000 & 9-50000

14	2	Rd. Hd. Screw	10-24 x .50"Lg.	2-22003-41
15	1	+ Key	.093" x .13 x .688"" 9-500407	
16	2	+ Lock Nut, Impeller	1/2-20, Stainless	2-20002-38
17a	A/R	+ Shim, .016 Thk		2-21010-1
17b	A/R	+ Shim, .032 Thk.		2-21010-2
18	1	Pipe Plug	.125" NPT, Stainless	2-32004-8
19	2	† O-Ring		2-31003-260
20	2	† O-Ring		2-31003-246
21	1	Outer Shell	2, 2.5 & 2.75HP	9-250555
	1	Outer Shell	3.5HP, 5HP	9-500555
22	1	Discharge Head (Includes 9-250702)	2 & 2.5HP	9-250700
	1	Discharge Head	2.75, 3.5HP & 5HP	9-500700
24	1	Strainer	Stainless Steel	9-500000-1
25	2	† O-ring		2-31003-025
27	1	+ Lockwasher, Impeller	.442 x 1.092, Stainless	9-500210
28	2	Hex Hd Screw	1/4-20 x .875"Lg, Stainless	1-6-1
29	2	† Connector	1 Phase	2-12026-1
	3	Connector	3 Phase	2-12026-2
30	2	Flat Washer	1/4 Stainless	086538
31	5	Hex Hd Screw	5/16-18 x 2.25"Lg., Stainless	1-159-1
32	6	Hex Hd Screw	5/16-18 x 3.50"Lg., Stainless	1-168-1
33	1	Rd. Hd. Screw	10-32 x 1/4"Lg., Brass	2-86-7
35	1	Tag, Lead, Ground		2-33012
37	6	Rivet		2-28002-3
38	5oz	Oil, Navy		A3195AB
39	1	Lockwasher	#10 Steel	21-10-3
40	3	Pan Hd Screw	1/2-20 x .50"Lg. CadPltd.	2-23010-54
41	3	Bracket		9-500003
42	1	Pipe Plug	.25" NPT Stainless 2-32004-12	
43	1	†+ O-Ring		2-31003-117
44	1	Retaining Ring		2-27004-98
45	1	Wear Plate, Polyurethane		9-501305
46	1	+ Bearing		112544
47	1	Stator Dam: P/N:	9-500750-2 2HP, 115/1 2HP, 230/1 2.75HP, 230/1	9-500750 2.5HP, 230/3 2.5HP, 460/3 5HP, 230/3 5HP, 460/3
48	1	+ Shaft Seal, Outboard	Silicon/Silicon/Viton®	9-500350
49	11	Flat Washer	5/16 Stainless	20-21-1

PUMP SERIES: 9-55000 (2-Stage)

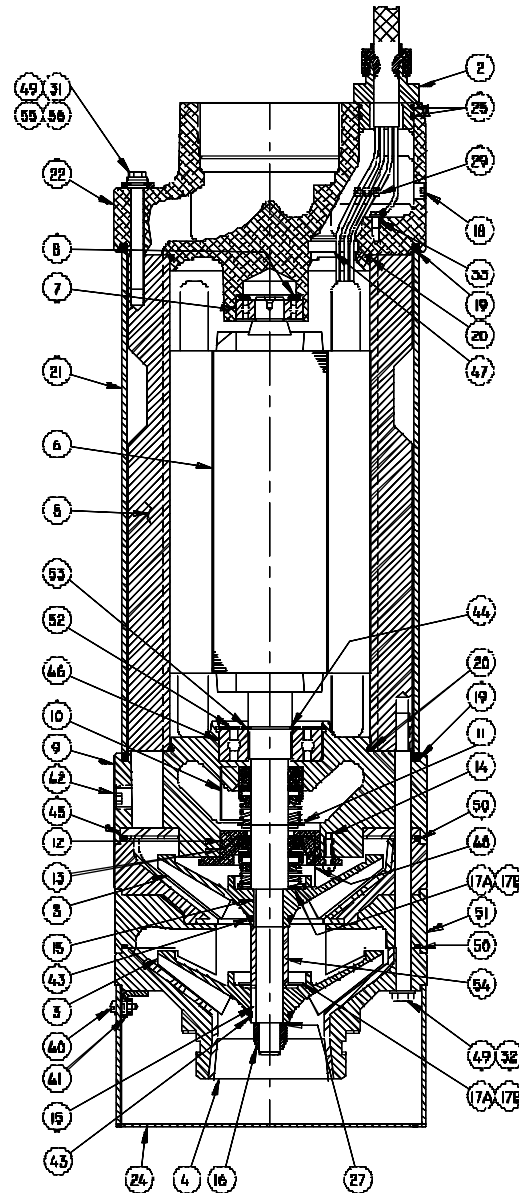
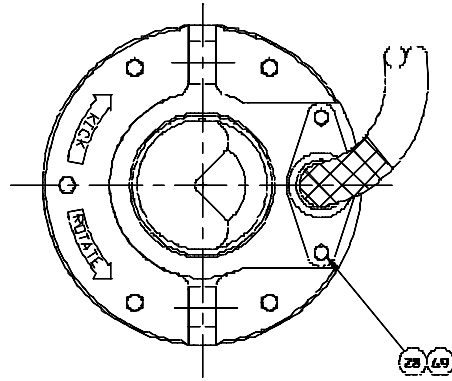


Fig. 16

PUMP SERIES: 9-55000 (2-Stage)

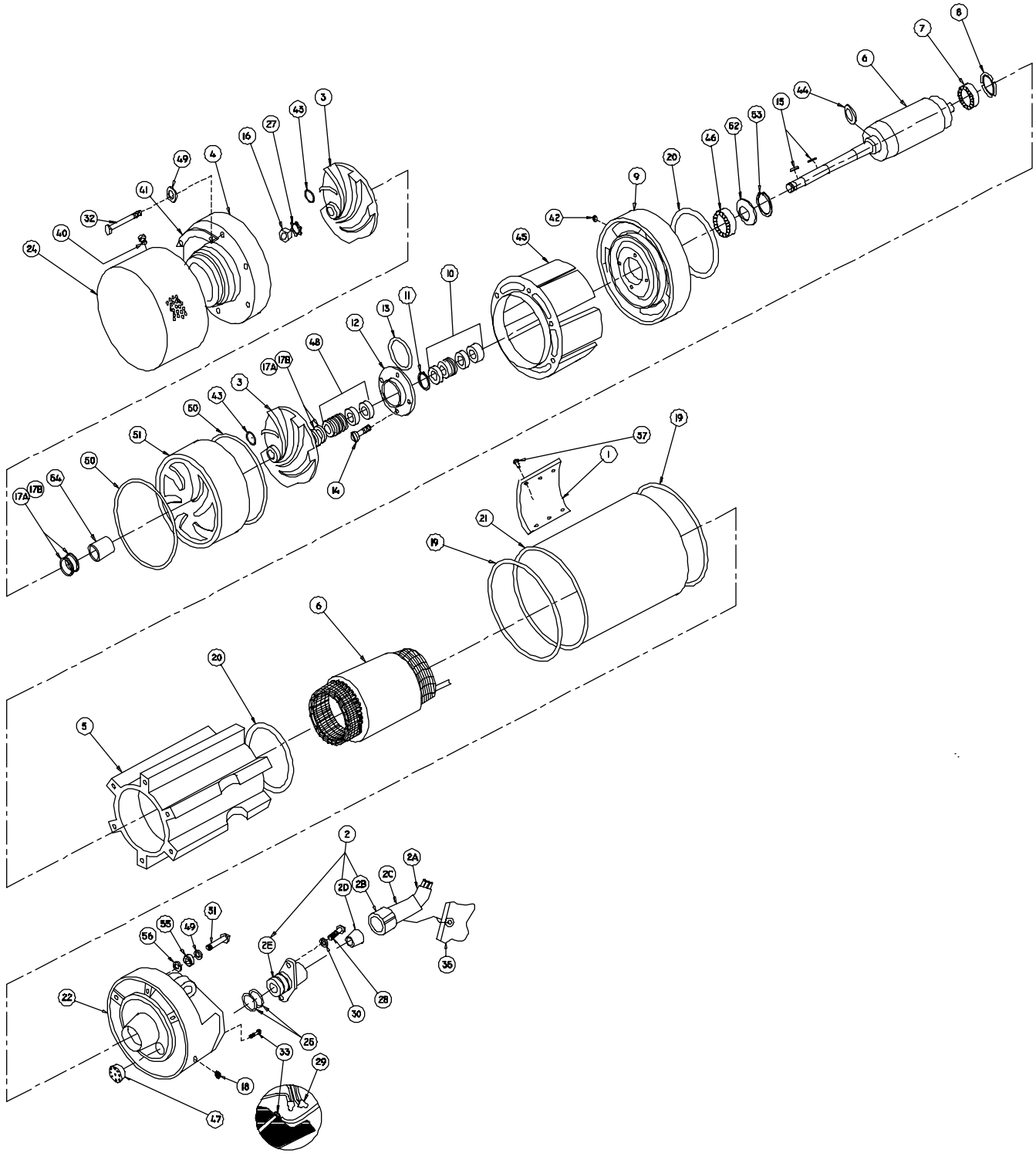


Fig. 17

PUMP SERIES: 9-55000 (2-Stage)

PARTS KITS

- Bearing & Seal Kit.....P/N - 9-550580** † 7,8,10,11,13,15,16,17a,17b,27,43,46,48.
O-Ring Kit.....P/N - 9-500574 † 2d,13,19,20,25,29,43.
Seal Tool Kit , 9-55000.....TL - 21357, Contact Parts Dept.

PARTS LIST

ITEM	QTY.	DESCRIPTION	PART NO.
1	1	Name Plate	2-33241
2	1	Cable & Gland Assy	9-500710-2
2a	1	* Cable, 50 ft.	9-350887-50
2b	1	* Cable Grip Nut	Stainless Steel 2-12062
2c	1	* Cable Grip	Alodined 2-12020-2A
2d	1	*† Bushing	Neoprene 2-12022-2
2e	1	* Cable Gland	Aluminum 9-500711-1
3	1	Impeller, Stainless	5.31" Dia 9-550200-2
4	1	Suction Case	9-550100
5	1	Frame	9-500500
6	1	Rotor	5HP, 230V, 3PH 9-550400
	1	Statot	5HP, 230V, 3PH 9-500600
	1	Rotor	5HP, 460V, 3PH 9-550400
	1	Stator	5HP, 460V, 3PH 9-500600
	1	Rotor	5HP, 575V, 3PH 9-550400
	1	Stator	5HP, 575V, 3PH 9-500635
7	1	† Bearing	112543
8	1	† Bearing Loading Spring	2-30002-6
9	1	Diffuser	9-550300-2
10	1	† Shaft Seal, Inboard	Carbon/Ceramic/Buna-N 2-31006
11	1	† Snap Ring	2-27002-87
12	1	Seal Retainer	9-815310
13	1	†† O-Ring	2-31003-035
14	4	Rd. Hd. Screw	10-24 x .50"Lg. 2-22003-41
15	2	† Key	.093" x .13 x .688" 9-500407
16	1	† Lock Nut, Impeller	5/8-18, Stainless 2-20002-43
17a	A/R	† Shim, .016 Thk	9-815210-1
17b	A/R	† Shim, .032 Thk.	9-815210-2
18	1	Pipe Plug	.125" NPT, Stainless 2-32004-8
19	2	† O-Ring	2-31003-260
20	2	† O-Ring	2-31003-246
21	1	Outer Shell	9-500555
22	1	Discharge Head	9-250700
24	1	Strainer	Stainless Steel 9-500000-1
25	2	† O-ring	2-31003-025
27	1	† Lockwasher, Impeller	.63 x 1.436, Stainless 9-550211
28	2	Capscrew	1/4-20 x .875"Lg, Zp 2-23012-40
29	2	† Connector	1 Phase 2-12026-1
	6	Connector	3 Phase 2-12026-1
	2	Flat Washer	1/4 Zp 2-21002-11
31	5	Capscrew	5/16-18 x 2.50"Lg., Pass 2-23002-11
32	6	Capscrew	5/16-18 x 6.50"Lg., Zp 2-23013-128
33	1	Rd. Hd. Screw	10-32 x 1/4"Lg., Brass 2-86-7
35	1	Tag, Lead, Ground	2-33012
37	6	Rivet	2-28002-3
38	6oz	Oil, Navy	A3195AB
40	3	Pan Hd Screw	1/2-20 x .50"Lg. CadPltd. 2-23010-54
41	3	Bracket	9-500003
42	1	Pipe Plug	.25" NPT Stainless 2-32004-12

PUMP SERIES: 9-55000 (2-Stage)

43	2	†† O-Ring		2-31003-117
44	1	Retaining Ring		2-27004-98
45	1	Wear Plate, Polyurethane		9-501306
46	1	† Bearing, Ball		112546
47	1	Stator Dam		9-500750
	1	Stator Dam	575 Volt ONLY	9-500750-1
48	1	† Shaft Seal, Outboard	Silicon/Silicon/Viton®	9-815350
49	11	Flat Washer	5/16 Zp	2-21002-14
50	2	O-Ring		2-31003-166
51	1	Diffuser, Lower		9-550303
52	1	Nilos Bearing Ring		2-30009-4
53	1	Retaining Ring		2-27006-244
54	1	Spacer		9-550209
55	1	Lockwasher	.328 x .750	9-605012
56	5	Quad Ring		2-31009-011

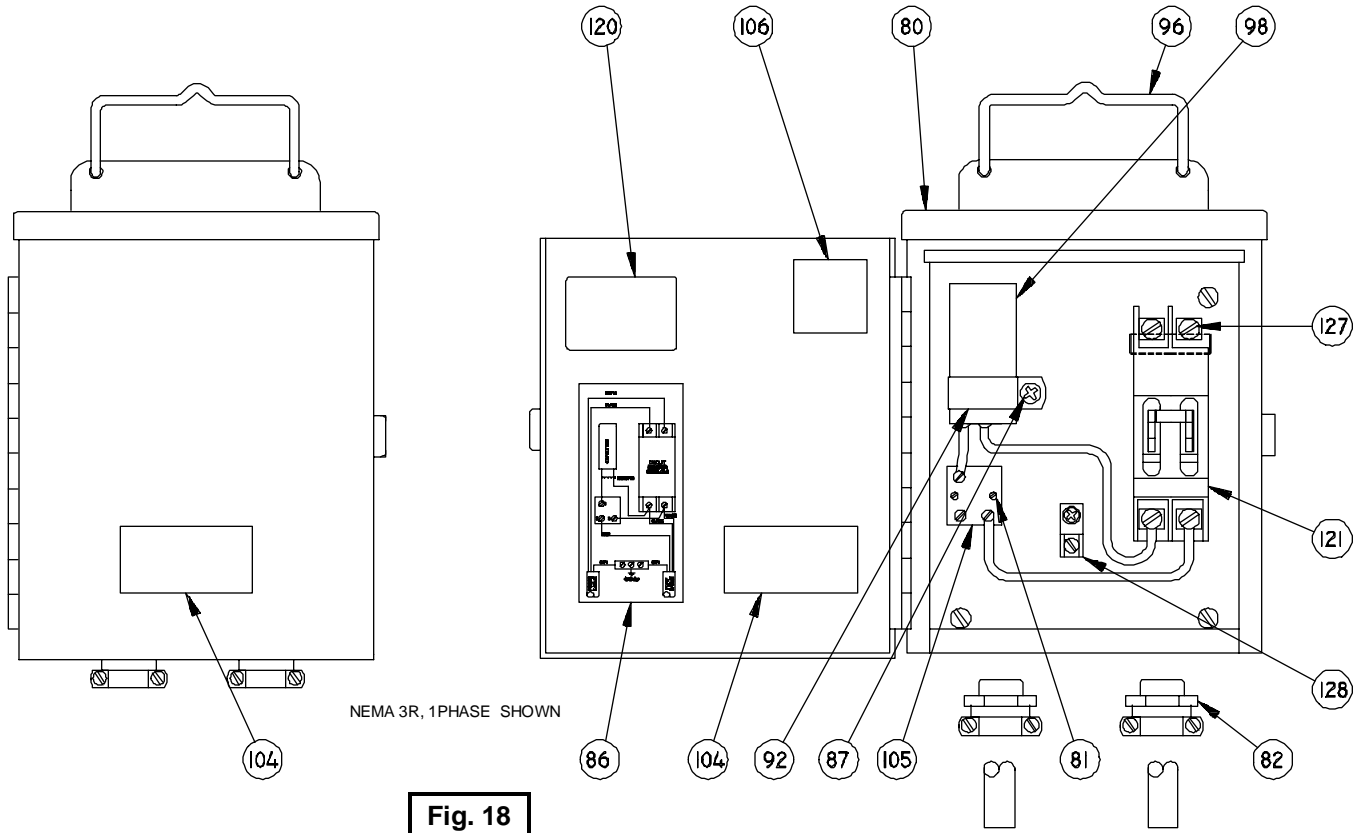


Fig. 18

PARTS LIST - NEMA 3R

ITEM	QTY.	DESCRIPTION	PART NO.
80.	1	Enclosure, NEMA 3R	9-840814
81.	4	Screw	6-32 x .312"Lg.
82.	2	Connector	.75" 2-22002-10 2-12005-2
86.	1	Connection Diagram	115/230V., 1 Phase 2-33064
	1	Connection Diagram	3 Phase 2-33065
87.	7	Screw	8-32 x .50"Lg 2-22009-16
91.	1	Capacitor, Run	SEE TABLE 4
92.	1	Clamp, Capacitor	2-12019-3
96.	1	Handle	9-100803
98.	1	Capacitor, Start,	SEE TABLE 4
99.	1	Clamp	2-12019-1
104.	2	Name Plate	1 Phase 2-33063
105.	1	Relay, 1Ph	115V. 9-200853-1
	1	Relay, 1Ph	230V. 9-350853-1
106.	1	Label, CSA	085809
108.	1	Terminal, Disconnect (Not Shown), 1Ph	2-12012-2
120.	1	Caution Label	2-33016
121.	1	Circuit Breaker	SEE TABLE 4
125.	1	Lable (Not Shown)	2-33011
127.	1	Mounting Bracket	2-28014
128.	1	Ground Lug	086135
	1	Ground Lug	5HP ONLY 086335

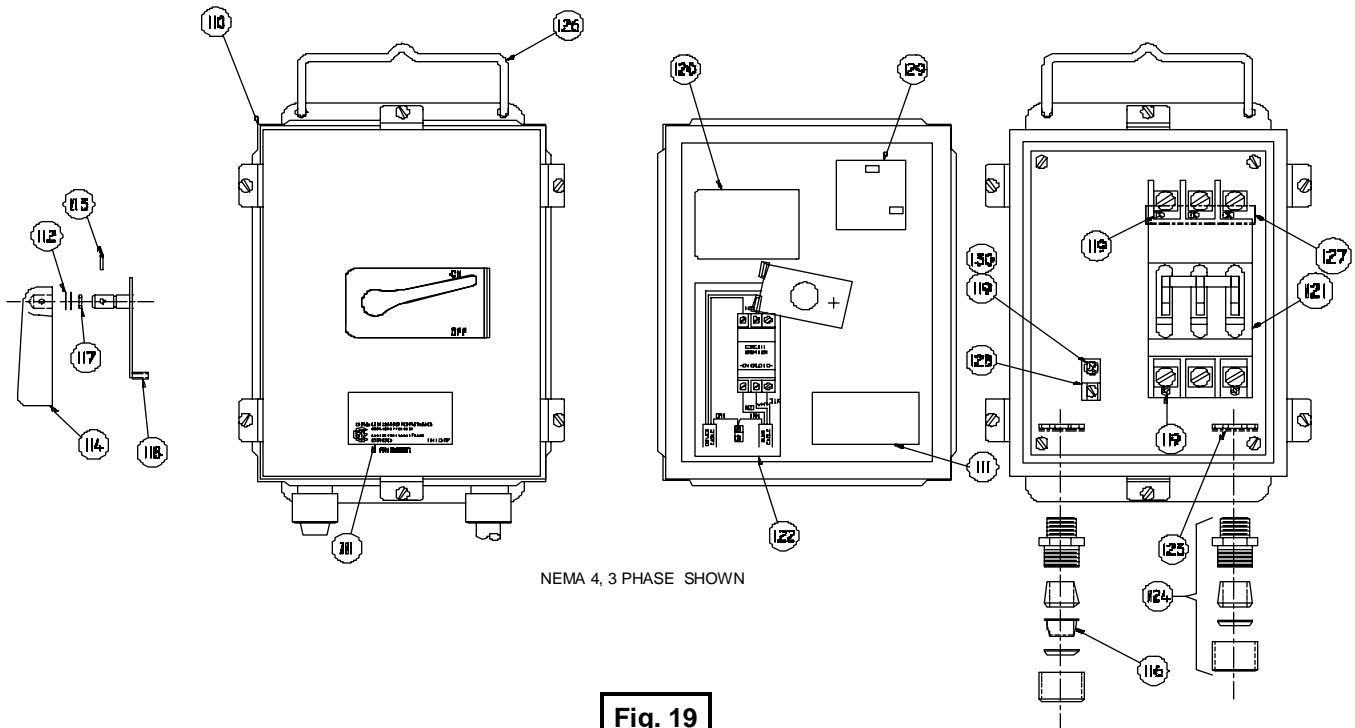


Fig. 19

PARTS LIST- NEMA 4

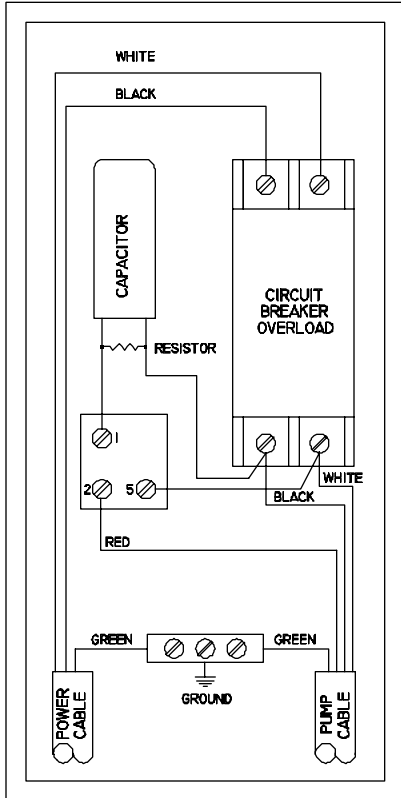
ITEM	QTY.	DESCRIPTION	PART NO.
91.	1	Capacitor, Run (Fig. 14)	SEE TABLE 4
98.	1	Capacitor, Start (Fig. 14)	SEE TABLE 4
99.	1	Clamp (Fig. 14)	2-12019-1
105.	1	Relay, (Fig. 14) 115V	9-200853-1
	1	Relay, (Fig. 14), 230V	9-350853-1
110.	1	Enclosure, NEMA 4	9-840859-1
111.	2	Name Plate	2-33237
112.	A/R	Shim Washer	2-21002-64
113.	1	Roll Pin	2-28008-3
114.	1	Handle	9-840870
116.	1	Caplug	2-32066-23
	1	Caplug	2-32066-30
117.	1	O-Ring	2-31003-010
118.	1	Actuator Assembly	9-840860
119.	6	Screw	2-22009-16
120.	1	Caution Label	2-33016
121.	1	Circuit Breaker	SEE TABLE 4
122.	1	Wiring Diagram	2-33064
		Wiring Diagram	2-33119
	1	Wiring Diagram	2-33065
123.	2	Connector, Nut	2-12055-2
124.	2	Connector, Cable, NEMA 4	2-12017-4
125.	2	Label, (Not Shown)	2-33011
126.	1	Handle, NEMA 4	9-840867
127.	1	Mounting Bracket	2-28014
128.	1	Ground Lug	086135
	1	Ground Lug	086335
129.	1	Name Plate, CSA	085809
130.	1	Lockwasher	2-21001-15

TABLE 4			+
PUMP HP, VOLTS/PHASE	CAPACITOR, RUN Item #91	CAPACITOR, START Item #98	CIRCUIT BREAKER Item #121
2.00HP, 115/1	N/A	2-13010-14 125V, 705-845MFD	9-200850-111 2P, 240V, 26A
2.00HP, 230/1	N/A	2-13010-15 250V, 189-227MFD	9-200850-112 2P, 240V, 13A
2.50HP, 230/3	N/A	N/A	9-500850-134 2P, 480V, 9A
2.50HP, 460/3	N/A	N/A	9-250850-134 2P, 480V, 4.5A
2.50HP, 575/3	N/A	N/A	9-250850-036 2P, 600V, 3.6A
2.75HP, 230/1	070965 370V, 25MFD	2-13010-15 250V, 189-227MFD	9-200850-112 2P, 240V, 13A
3.50HP, 230/1	N/A	2-13010-2 110V, 430-516MFD	9-350850-112 2P, 240V, 22A
5.00HP, 230/1	N/A	2-13010-2 110V, 430-516MFD	9-350850-112 2P, 240V, 22A
5.00HP, 230/3	N/A	N/A	9-815850-136 2P, 600V, 18A
5.00HP, 460/3	N/A	N/A	9-500850-134 2P, 480V, 9A
5.00HP, 575/3	N/A	N/A	9-500850-036 2P, 600V, 7.2A

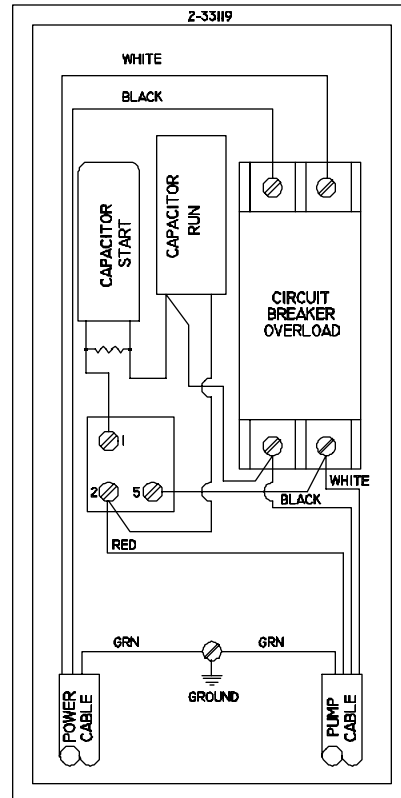
N/A = Not Applicable

Single Phase & Three Phase Control Panel Schematics:

115 & 230 Volt Single Phase



2.75HP Single Phase (ONLY)



230, 460 & 575 Volt Three Phase

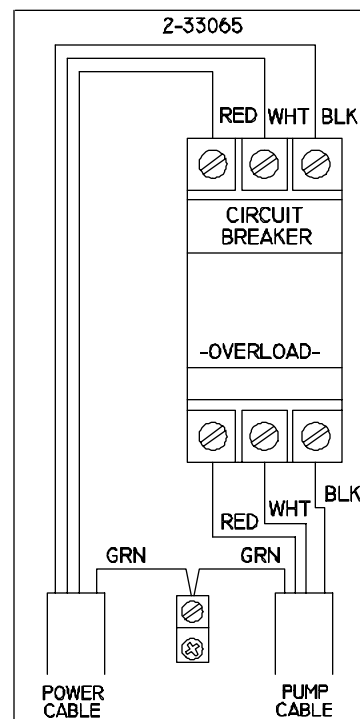
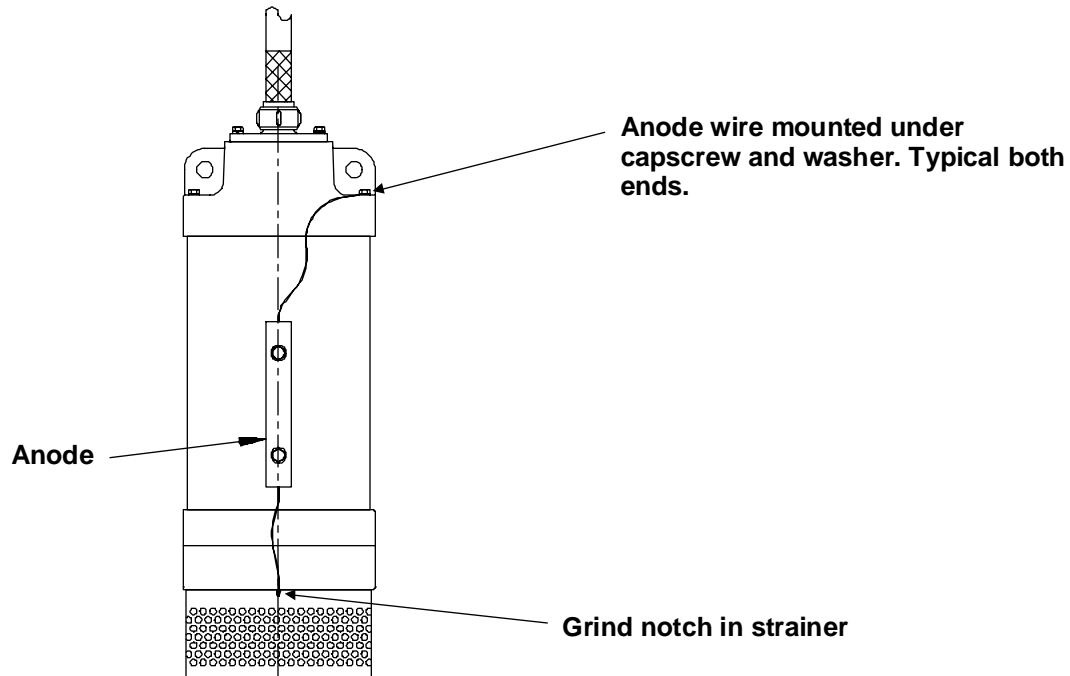


Fig. 20

Galvanic Protection Kit
P/N: 9-500572



PARTS LIST

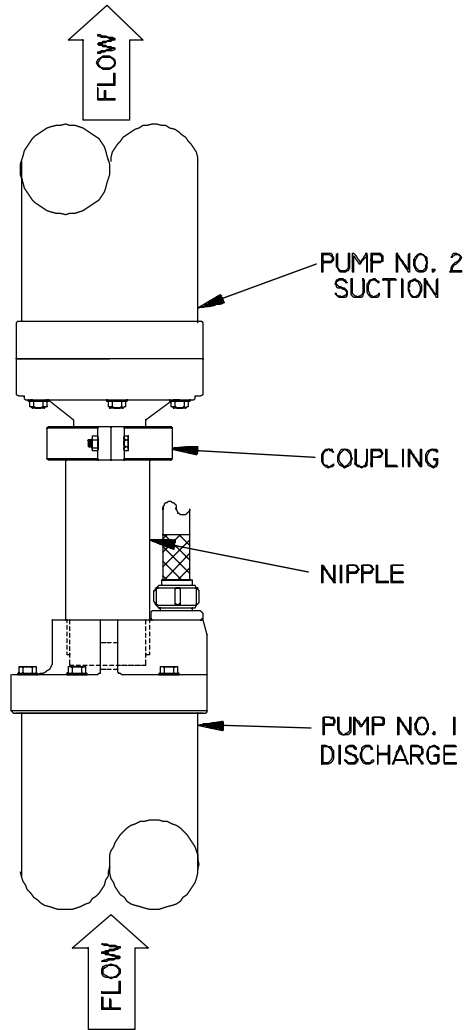
QTY.	DESCRIPTION	PART NO.
2	Flat Washer, 1/4" Stainless	2-210002-59
2	Hex Hd Screw, 1/4-20 x 1.125"Lg. Stainless	2-23021-58
1	Zinc Anode Sensor	9-500520

1. Pump must be ordered with the Galvanic Protection Kit to have the correct frame and outer shell.
2. Align two clearance holes in outer shell with the two drilled and tapped holes in frame, before tightening cap screws on the suction nozzle.
3. Fill the two drilled & tapped holes in frame approximately half full of electrical bonding grease part number 2-45003-1.
4. Install washers and capscrews through zinc anode and into the frame holes, partially filled with bonding grease and tighten securely.
5. Route wire from anode to the suction nozzle. Loosen suction nozzle capscrew & washer and install wire between washer & suction nozzle, retighten capscrew. Route other wire to discharge head and install under discharge head capscrew and washer.
6. Slip suction strainer on pump, align mounting screws, mark strainer where anode wire passes between suction nozzle and strainer. Grind a notch in the strainer to allow clearance for the wire. Install the strainer.

Series Adapter Kit

Pump Models: 9-20000, 9-25000, 9-55000....P/N: 9-250770

Pump Models: 9-27000, 9-35000, 9-50000....P/N: 9-500770



PARTS LIST

P/N: 9-250770

QTY.	DESCRIPTION	PART NO.
1	Nipple, Reducer, 2" NPT x 8" Lg	2-32026-1
1	Coupling, 3" Victaulic	2-32016

PARTS LIST

P/N: 9-500770

QTY.	DESCRIPTION	PART NO.
1	Nipple, Victaulic, 3" NPT x 6" Lg	2-32015-1
1	Coupling, 3" Victaulic	2-32016