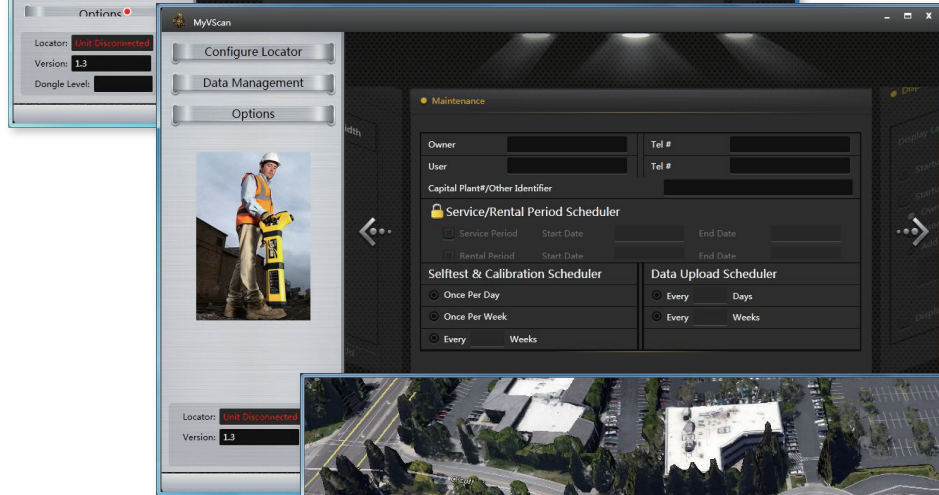
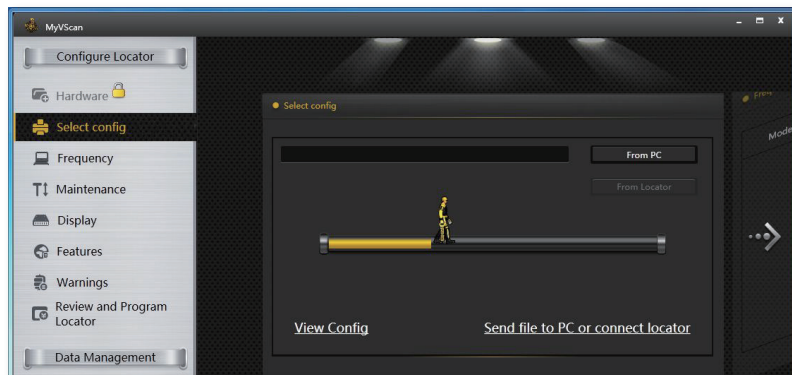




**VIVAX**  
**METROTECH**

# MyvScan App



# MyvScan App

A desktop software utility used to configure a Vivax-Metrotech vScan avoidance tool/locator and to manage the transfer and analysis of data logged by the vScan. Download for FREE from: [www.vivax-metrotech.com](http://www.vivax-metrotech.com).

Your vScan comes configured and ready to use as an avoidance tool - or - pipe and cable locator. For day-to-day avoidance or locating you don't need to use MyvScan.

MyvScan enables personalization of the vScan and is used to manage the data logged.

## Custom Configuration

All configurations can be stored and copied to multiple locators.

Plant or safety officers can set and control the configuration of their locators. Those configurations can be locked (using the optional "lockout" dongle). The user cannot change that configuration.

### Personalize

- Add owner and user contact name and telephone #
- Show a message on the startup screen
- Add a logo or picture as a background

### Features

- Date, time, time zone and format
- Select or de-select features
- Set standby/shutdown times
- Setup units of measure
- Define default "Startup" mode

### Warnings

All warnings can be communicated by an icon on the display, an audio sound, or a sharp vibration of the handle, these are selectable. Under certain conditions the locator can also be "shutdown" .

The key locate warnings/alerts provided by the vScan are:

- Swing alert
- Shallow line alert
- Signal overload alert
- Overhead signal alert
- Action required alert

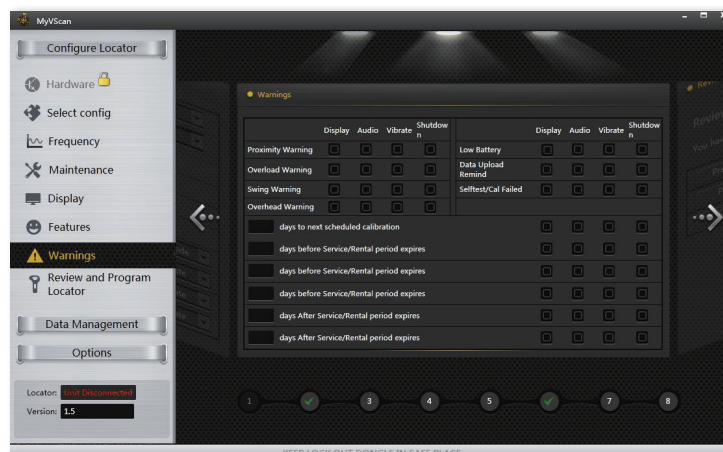
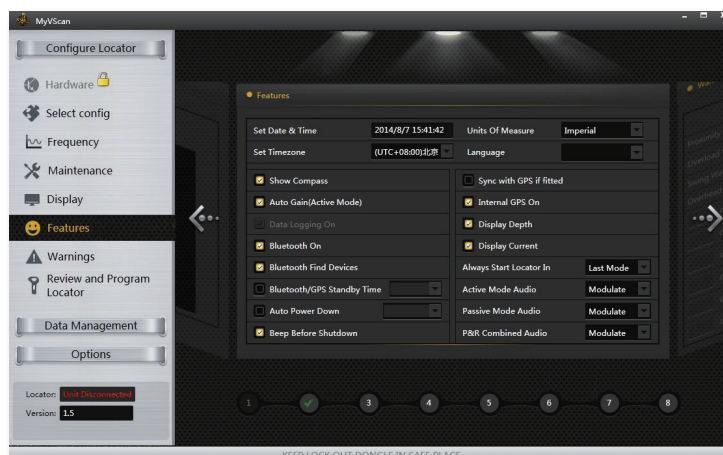
In addition an action required alert prompt the user that:

- Self-test/calibration due/overdue
- Service/maintenance required
- Rental period ended
- Data upload due

### Scheduler

Schedule routine events:

- Self-test and calibration verification schedule
- Prompt to upload data
- Prompt when service is required
- Prompt when end of rental period is approaching



# Data Management

## Importing/storing data and updating software

Decide where to store data, on your PC, a network, or the Cloud. When a vScan is connected, MyvScan will prompt to upload data or install updated software to your vScan.

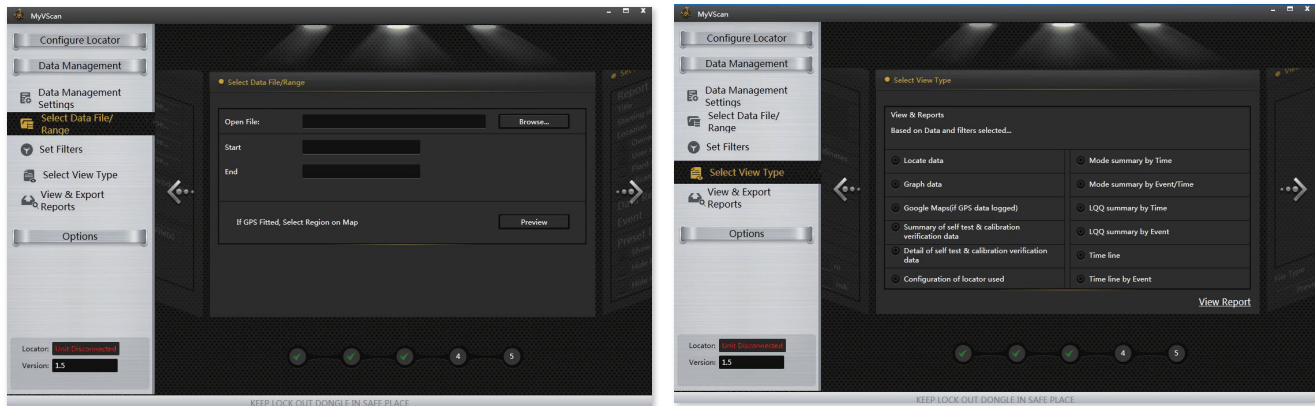
## Templates

The following shows how a report is configured, any report configuration can be stored as a template and reused or modified at any time.

## Choosing the data to view

When optional GPS is fitted, preview and select the data required on Google map.

MyvScan will log significant data at each data point. A drop-down dialogue box is provided to select which data to review. An event menu is provided to select data recorded only when the "i" button is pressed.



## Preset Data Filters

When locating, the vScan operator can create a flag in the data log to indicate the start and end of an area of interest – if selected in MyvScan all but “areas of interest” will be filtered out. Similarly the locator can identify data where none of the conditions required for an acceptable locate are present – by selecting “filter out unqualified data” all non-complying data will be filtered out. Selecting any of these filters does not destroy the data it only filters it from the report being generated.

Depth, shallower than or deeper than are useful filters to identify sections of buried lines when digging close proximity.

## View data

The data you have selected can now be viewed using a selection of pre-defined report formats. Look at raw data, graphs or data displayed on Google Maps.

## Quality Data

vScan configuration, self-test and calibration records can be uploaded and viewed. A self-test and calibration verification certificate can be generated for printing, saving or exporting.

## Mode Usage

The time spent in each mode can be portrayed as “absolute time” or “comparatively” as a pie chart, useful in establishing if work practices are being followed.

## Time

Provides information regarding the time the locate was started and finished and any stoppages in between, also the time between “info” presses, and time spent on areas or interest vs general locating.

## Export

Data can be previewed on the screen, saved, or exported in any of the following formats.

.XLS, .XLSX, .CSV, .SHP, .KML, .PDF, .JPG

Vivax-Metrotech will expand the ability to format and filter report provide additional useful ways of reviewing the data.

### Vivax-Metrotech Ltd.

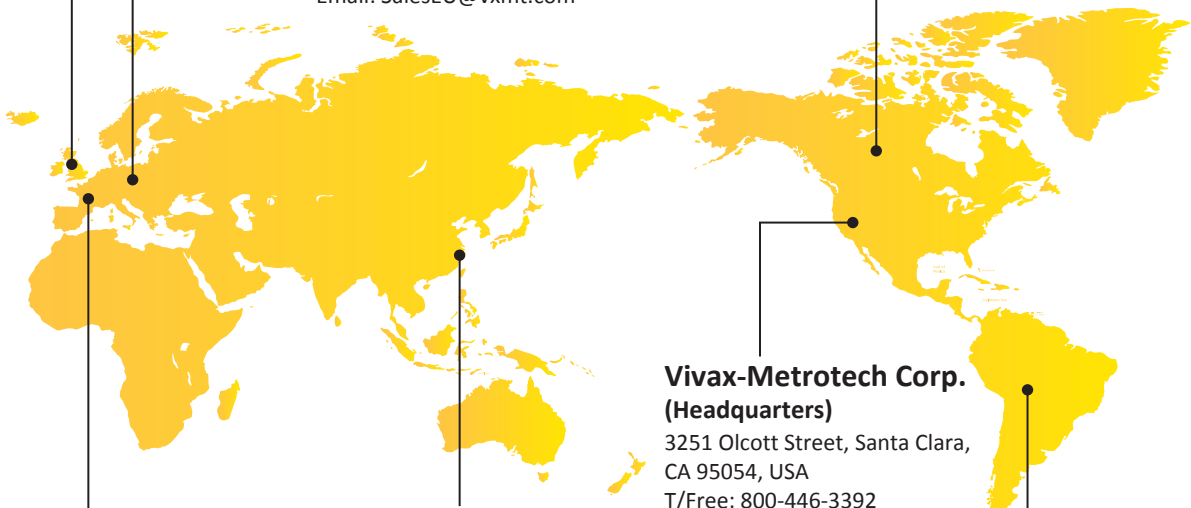
Unit 1, B/C Polden Business Centre, Bristol Road,  
Bridgwater, Somerset, TA6 4AW, UK  
Tel: +44(0)1793 822679  
Email: SalesUK@vxmt.com

### Vivax Canada Inc.

41 Courtland Ave Unit 8, Vaughan,  
ON L4K 3T3, Canada  
Tel: +1-289-846-3010  
Fax: +1-905-752-0214  
Email: SalesCA@vxmt.com

### Metrotech Vertriebs GmbH

Am steinernen Kreuz 10a  
D-96110 Schesslitz  
Tel: +49 954 277 227 43  
Email: SalesEU@vxmt.com



### Vivax-Metrotech (Shanghai) Ltd.

3/F No.90, Lane 1122 Qinzhou Rd.(N),  
Shanghai, China 200233  
Tel: +86-21-5109-9980  
Fax: +86-21-2281-9562  
Email: SalesCN@vxmt.com.cn

### Vivax-Metrotech Corp. (Headquarters)

3251 Olcott Street, Santa Clara,  
CA 95054, USA  
T/Free: 800-446-3392  
Phone: +1 (408) 734-1400  
Fax: +1-408-734-1415  
Email: SalesUSA@vxmt.com

### Vivax-Metrotech SAS

Technoparc - 1 allée du Moulin Berger,  
69130 Ecully, France  
Tel: +33 (0)472 53 03 03  
Fax: +33 (0)472 53 03 13  
Email: SalesFR@vxmt.com

### Ventas para América Latina

3251 Olcott Street, Santa Clara, CA 95054, USA  
T/Free: 800-446-3392  
Tel: +1-408-734-1400  
Fax: +1-408-743-5597  
Email: LatinSales@vxmt.com

Local Vivax-Metrotech Distributor:

CONNECT WITH US ON SOCIAL MEDIA



Disclaimer: Product and accessory specifications and availability is subject to change without prior notice.

V1.1 (Feb 2020)